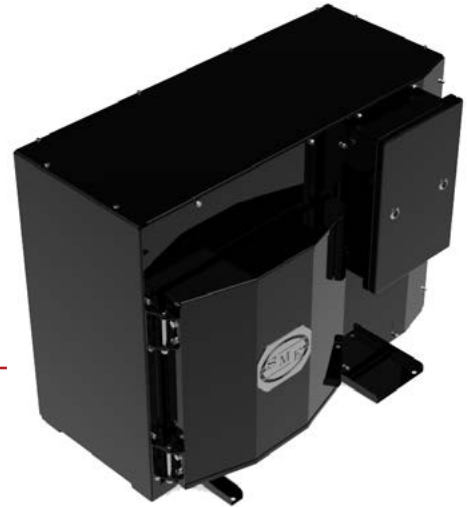
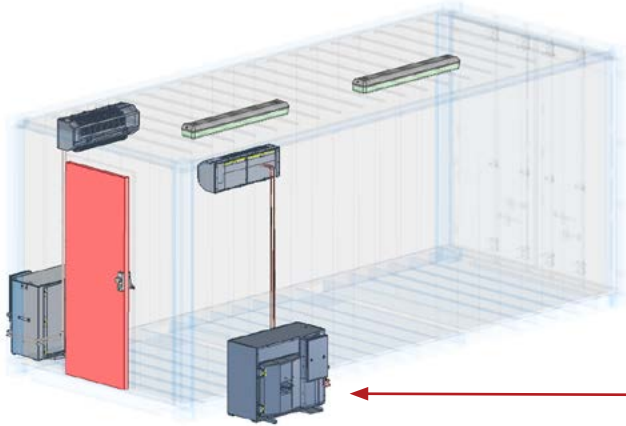


# Coach HVAC

## Ruggedised Split



Ref. DRA-SM

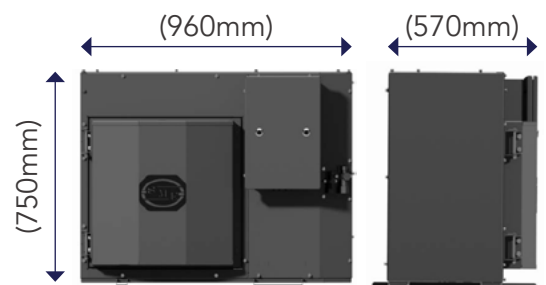
### SPECIFICATION

#### 7.5kW Split System with Reverse Cycle Function

<b>Cooling Capacity</b>	23200 BTU (6.8kW); 32400 BTU (9.5kW)
<b>Control</b>	Daikin Electrical Control
<b>Refrigerant</b>	R-410a
<b>Environmental</b>	Design Ambient 45°C
<b>Power Supply</b>	1 Phase, 50Hz, 220 - 240V
<b>Weight (Condensing Unit)</b>	60kg
<b>Dimensions (Condensing Unit)</b>	960mm L x 570mm W x 750mm H
<b>Enclosure Colours</b>	Black, Gray, White, Yellow, Custom
<b>Can connect to three evaporator modules</b>	Under ceiling / High wall / Hide away

#### ADDITIONAL FEATURES

- ▶ Increased Rust/Corrosion Resistant (3CR12 Enclosure/304 Stainless Steel)
- ▶ IP55 Electrical Enclosure
- ▶ High Efficiency Fan
- ▶ Heavy Duty Coil, 20% Upgraded for High Ambient, 8FPI
- ▶ Maintenance-Friendly Access Hatches
- ▶ Shock and Vibration Qualified
- ▶ Inverter Controlled Heating and Cooling



Weight: 60kg