

MAC Smart Control & Display HMI *Rail Specific*

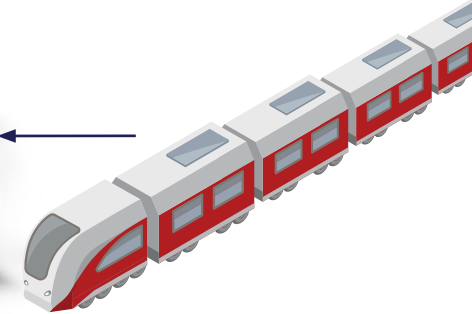


SME MULTI-APPLICATION SYSTEM MANAGEMENT & CONTROL (SMARTMAC)



MAC Bluetooth to smartphone from HVACs

Bluetooth MAC Controller for in-depth diagnostics on HVACs

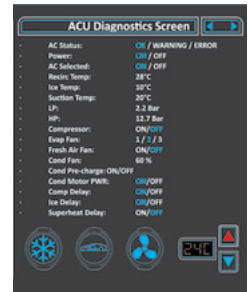


MAC CAN Bus from HVAC HMI

Visual overall system status and health on HMI



Access to comprehensive diagnostics on HMI down to component level



Ref. SMEMAC

FEATURES

The General-Purpose Controller (most important module) acts as the master controller to all MAC modular stacks, and contains digital inputs & outputs, analogue inputs, relays, USB and CAN Bus.

The Electronic Surveillance Module (ESM) provides data logging and receives all the data from all other modules in the system. It then writes it in a recognizable format to an SD card. Real time system monitoring can be obtained via Bluetooth or a USB connection. A smartphone can be used for retrieval of real time data, but it can also be used for sending commands to the unit. Status and control can also be done from any location via internet.

The module can also be used as a solid-state relay for switching compressors or fans. The module provides superfast protection against short circuits, overvoltage, over current and over temperature of the component it is driving.

The MAC simplifies and reduces the space consumed by conventional control systems.

Reduces downtime as a result of electronic failure (easy replacement of modules).

Protects the electronics from harsh environmental conditions. (75°C Ambient)

Interfaces with our purpose built compact Human Machine Interfaces (HMIs) or control panels for where comprehensive insight into system diagnostics is needed.

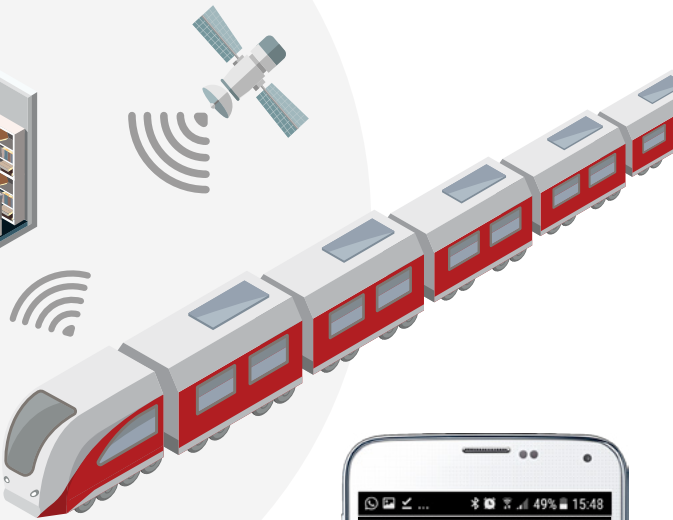
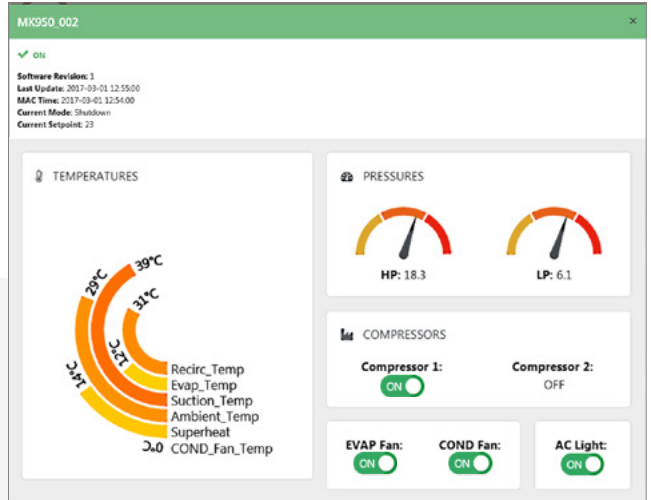
HVAC STATUS AT YOUR FINGERTIPS - ANYTIME, ANYWHERE

REALTIME MONITORING

- ▶ All System Temperatures
- ▶ Warnings & Errors
- ▶ Fluctuations

MANAGE

- ▶ System Parameters
- ▶ Verify & Adjust
- ▶ Statistics & Diagnostics



THE RESULT

- ▶ Keeping your finger on the pulse from your office / home
- ▶ Make use of any device via internet & bluetooth
- ▶ Immediate warning / error notification for proactive response
- ▶ See system status in real-time
- ▶ Change system parameters without getting your hands dirty
- ▶ Receive Real Time notifications to enable preventive action

